

applicom® is the easiest and trouble free solution to quickly connect your PC-based industrial applications to the industrial world.

molex®
one company > a world of innovation

applicom® is a range of intelligent communication solutions, complete and ready to use covering more than 40 protocols among a wide choice of industrial networks and fieldbuses: Ethernet, Profibus, Modbus Plus, WorldFIP and Serial Links. These solutions connect your PC-based applications (HMI, SCADA, MES, custom applications) to industrial equipments (programmable controllers, I/O modules, Panel PC, process instruments, etc).

Thanks to applicom® smart built-in processor technology - each interface card is able to execute all management and the processing (polling, frame management, etc) of communications protocols without taking CPU time from your computer, resulting in extremely fast, efficient application performance.

applicom® solutions are recommended for SCADA/HMI, and customs development which require high powerful data acquisition to manage a large number of I/O data. applicom® cards are successfully installed around the world in sectors as varied as oil&gas, automotive, food processing, technical building management, and transportation.

FEATURES AND BENEFITS

- Fast data acquisition between PC-based applications and industrial devices connected to Ethernet TCP/IP
- On board co-processor eliminates data bottlenecks, ensuring delivery of time critical information
- "All-in-One" - All protocols included in the package
- Best choice for HMI/SCADA applications
- High value engineering software tools; enabling fast integration of industrial communication into your applications (configuration, diagnostic, data servers, development libraries)
- Save commissioning time; ONE configuration and ONE diagnostic tool whatever the protocols used
- Quick "Return-Of-Investment"; Single development library and OPC server reduce the time required to learn and integrate applicom® products in your architectures
- Simultaneously run all TCP/UDP protocols in Client/Server modes
- Support Windows and exotic OS (VxWorks, Linux, Ardenne RTX)
- Combine several cards (up to 8) and run simultaneously from 1 to 32 protocols in a single PC
- Combo versions:
 - Ethernet + Profibus (1.5 Mbps)
 - Ethernet + Serial (38.4 Kbps)

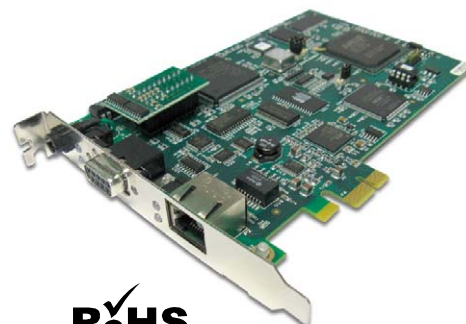
APPLICATIONS

- Supervision / Scada to monitor plant
- HMI; Acquisition of process data on on panel pc to manage complex machine
- Active Front-End acquisition for building management systems such as fire detection, access control, power distribution, HVAC
- Measures and bench tests for process simulation, car engine validation, and experimental prototypes,
- Tools to help you design solutions to suit your particular needs such as a gateway feature, time table management, alarming, etc.



applicom® Ethernet Cards

PCI and PCI Express Network Interface Cards



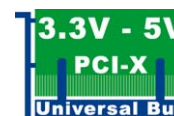
RoHS

CE

applicom®
PCI Express Card



WindRiver



PCI EXPRESS



Collaborative Automation
by
Schneider Electric

New!

- Support of Windows 32-bit and 64-bit (WoW64)
- Support of Windows Seven and 2008 Server

SPECIFICATIONS

Product Information

Product Package

- Engineering Tools
 - Configuration console
 - Test and diagnostic tools
- Data Servers
 - OPC DA v3.0 and v2.05
 - Wonderware DAServer (XP only)
 - Wonderware I/O (SuiteLink/FastDDE) (XP only)
- Includes Development Libraries
 - MS Visual Studio (.NET/C#/VB/C++/C)
 - Borland Delphi, Windev, and National Instruments (LabWindows CVI, LabVIEW/VI)
- Supported OS:
 - Windows (32-bit & 64-bit): Seven, 2008 Server, Vista, 2003 Server, XP
 - Others: Linux, VxWorks, RTX VenturCom

Technical Data

- Bus Format
 - PCI Universal bus 3.3V/5V (PCI-X compatible)
 - PCI Express 1x
- Hardware Plug & Play
- AMD SC520
- 16 Mb SDRAM
- 4 Mb Flash Memory

Communication Ports

- 1 Ethernet port
 - Fast Ethernet 10/100 Mbps, auto negotiating
 - Base-T (RJ45), 4 leds (Rx, Tx, Link, 10/100)
- 1 Profibus port
 - D-Sub, 9pin, female
 - 2 leds (TX/RX)
 - RS485 with galvanic insulation (500 V)
 - 9.6 Kbps to 1.5 Mbps
- 1 Serial port
 - D-Sub, 9pin, male
 - 2 leds (TX/RX)
 - RS485/RS422 with galvanic insulation (500 V)
 - 50 bps to 38.4 Kbps

Protocols

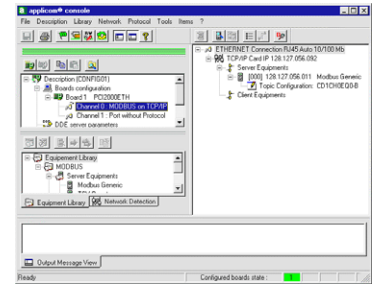
- Ethernet TCP/IP (manage Client/Server modes simultaneously)
 - Altus - AInet II (AL 200x, Webgate)
 - Alstom - SRTP (C80-35, C80-75)
 - Allen-Bradley - EtherNet/IP (PCCC) (Logix, PLC-5 and SLC 500)
 - GE Fanuc - SRTP (90-30, 90-70)
 - Mitsubishi - Melsec (A, Q)
 - Omron - FINS (C, CV, CS)
 - Schneider – Open Modbus TCP
 - Schneider – UNI-TE (Premium & Micro)
 - Siemens - Industrial Ethernet (S5, S7, TI)
 - UDP Send/Receive (Free messaging)
- Ethernet ISO
 - Schneider – Ethway
 - Siemens - Industrial Ethernet ISO (S5, S7, TF and TI)
- Profibus
 - Profibus DP-V0 Master Class-1 & Class-2
 - FDL for S5 Master (Siemens S5)
 - S7/MPI Master (Siemens S7)
 - Send/Receive on FDL (Develop your free messaging on Profibus)
- Serial
 - Allen-Bradley - DF1 Master
 - GE Fanuc - SNP-X Master
 - Elsag Bailey – Data Link Master
 - Modbus Master / Slave (ASCII & RTU)
 - Omron – Sysmac Way Master
 - Saia – S-Bus Master
 - Schneider – Uni-Telway Master/Slave
 - Siemens - 3964/3964R Master
 - Siemens - AS511 Master
 - Siemens – PPI/PPI+ Master
 - Siemens - TI-Dir Master

Conformances

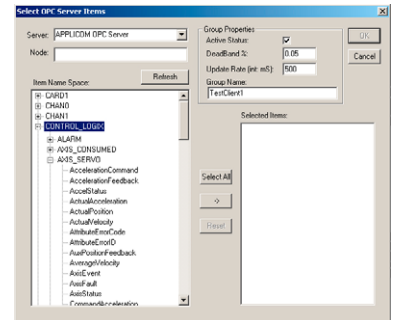
CE, RoHS, OPC Certified, PCI Express certified, Rockwell Encompass, Schneider Collaborative

applicom® Ethernet Cards

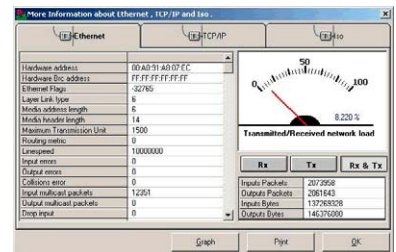
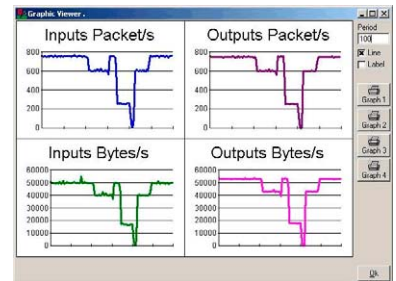
PCI 3.3V / 5V and PCI Express 1x Network Interface



- Engineering Console -



- OPC Server -



- Diagnostic Tools -

ORDERING INFORMATION

Order No.	Engineering No.	Description
112000-0005	APP-ETH-PCU-C	applicom PCU2000ETH PCI Network Interface Card for Ethernet
112000-5026	APP-ETH-PCIE	applicom PCIE2000ETH PCI Express Network Interface Card for Ethernet
112000-0001	APP-EPB-PCU-C	applicom PCU2000ETH PCI Network Interface Card for Ethernet + Profibus
112000-5028	APP-EPB-PCIE	applicom PCIE2000ETH PCI Express Network Interface Card for Ethernet + Profibus
112000-0003	APP-ESR-PCU-C	applicom PCU2000ETH PCI Network Interface Card for Ethernet + Serial
112000-5027	APP-ESR-PCIE	applicom PCIE2000ETH PCI Express Network Interface Card for Ethernet + Serial